

SEE THINGS DIFFERENTLY



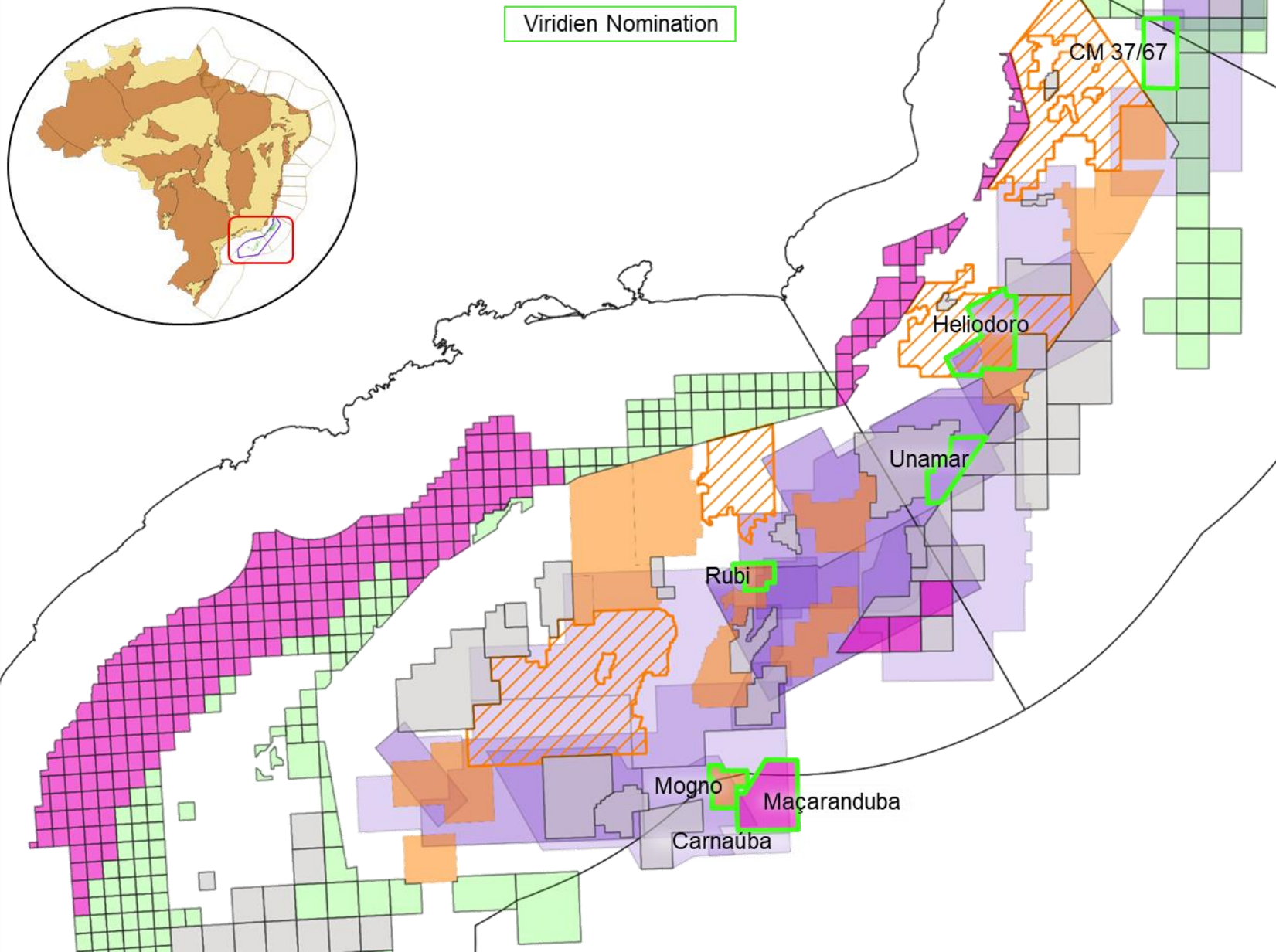
VIRIDIEN EXPLORATION RESULTS

Bruna Lyra & Eduardo Leaubon
Exploration Team

viridiengroup.com

VIRIDIEN

Regional Viridien Cover



- G&G Viridien Team has performed nominations (pre- and post-Salt).
- Crustal understanding and CO₂ de-risking
- Re-assessment of Geological risk

- Viridien Nomination
- ANP Blocks Public Hearing for Bid
- Viridien Coverage
- Blocks Waiting MME Approval for next Bid
- ANP Blocks Under Study
- Exploratory Blocks Under Concession
- ANP Geological Assessment

Context



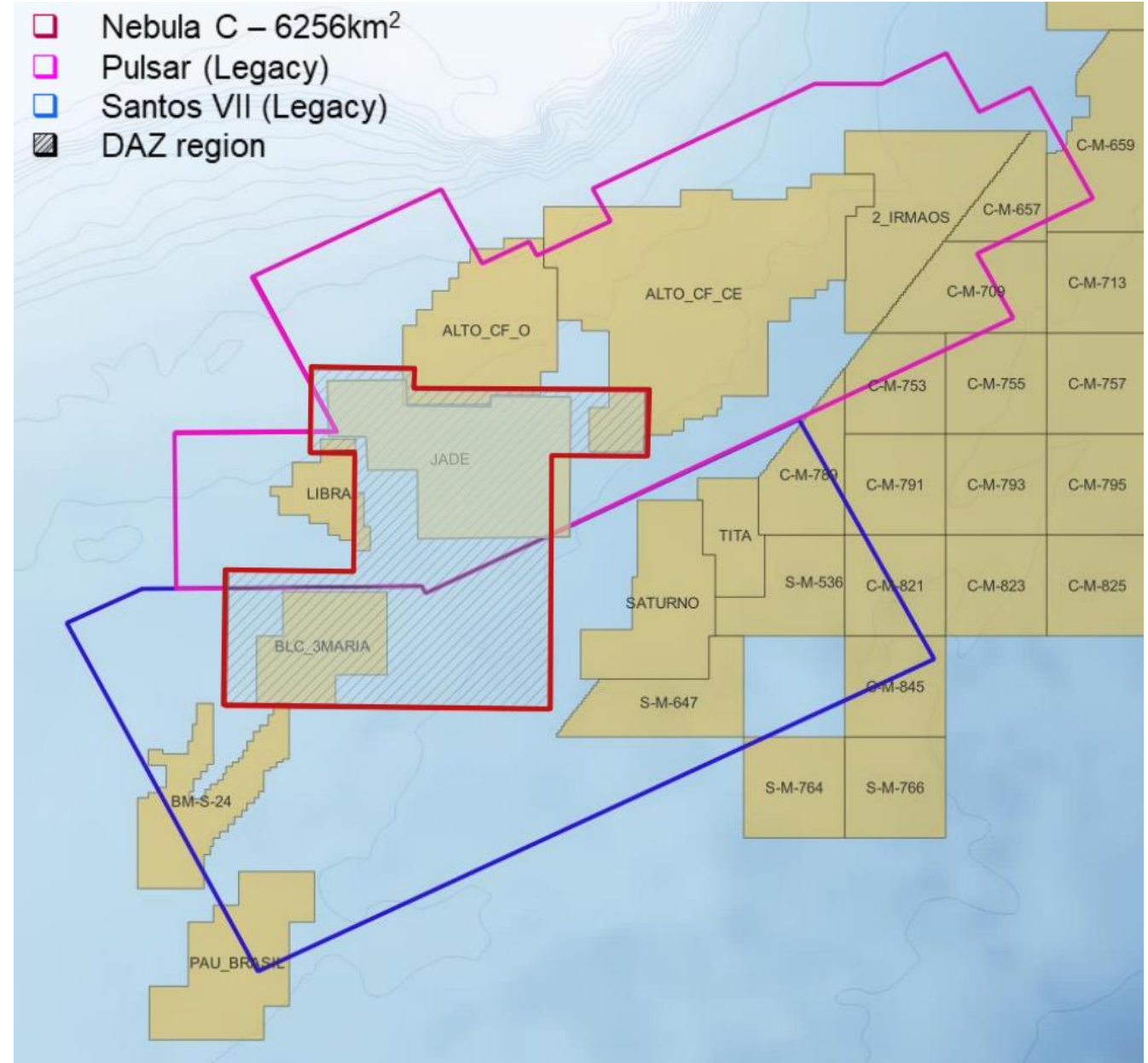
Nebula C data covers Jade, Libra and Três Marias exploratory blocks, and also **open acreage**.

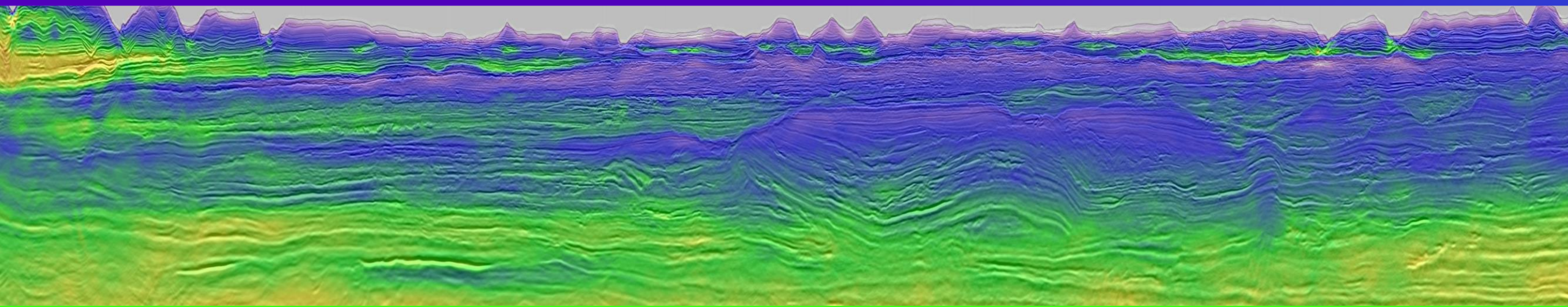
- Dual azimuth data imaged up to 20 km depth with longer offset than legacy data
- Enables ultradeep feature analysis and crustal settings interpretation
- Separately during acquisition, the Três Marias well was drilled

Geology and geophysics (G&G) exploratory work was performed in Nebula C to assess its prospectivity.

New prospect identified

Now Rubi Block





THANK YOU

Bruna.lyra@viridiengroup.com

Eduardo.Leaubon@viridiengroup.com